

300°C

110°C

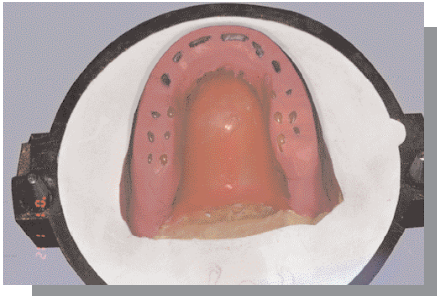
coltène®
Lab-Putty

coltène®
Lab-Putty hard

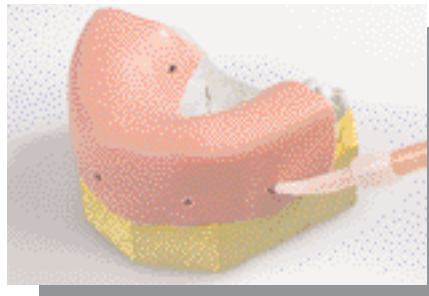
UNLIMITED

coltène 
whaledent®

coltene® Lab-Putty



Isolation / denture heat protections



Key for gingival mask



Model for repairs

Indications	Lab-Putty	Lab-Putty hard
• Matrix for the formation of general occlusion and functional patterns		
• Model for repairs		
• Soldering		
• Isolation / denture heat protections		
• Hard palate relief stamps		
• Key for the gingival mask		
• Block outs		
• Matrix to built partial and full dentures		
• Relinings		

TECHNICAL DATAS LAB-PUTTY: *

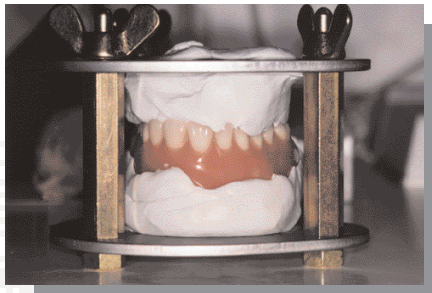
Product	Mixing time in s	Working time in s	Setting time in min	Endhardness in shore A	Dimension stability in %	Heat resistance in °C / °F
Lab-Putty	30-45	90	5-7	63-70	1h -0.08 1day -0.16	110°C / 230°F
Lab-Putty hard	45	120	5-7	95	1h -0.04 1day -0.13	300°C / 570°F

* after dosage according to instructions for use



coltène®

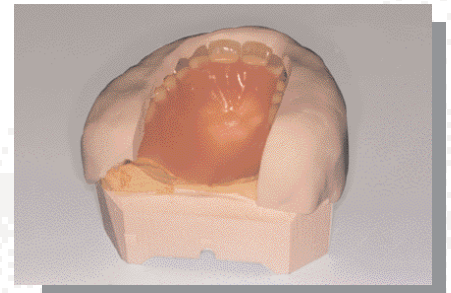
Lab-Putty hard



Full denture relinings



Matrix for facings

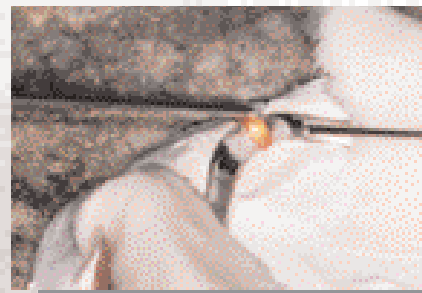


Matrix for full dentures

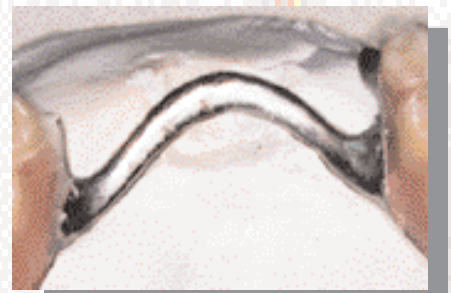
Heat resistant up to **300°C / 570°F**



Broken partial denture



Soldering of the point of fracture



After polishing

Coltène Laboratory modeling materials: Lab-Putty and Lab-Putty hard used in the appropriate applications have important benefits for the lab-technician:

Easy and safe dosage, convenient mixing consistency, problem-free removal and an ideal elasticity after setting. In addition, the optimised end hardness and out-standing dimensional stability provide perfect accuracy and excellent results in a time saving manner.

During the use of both types of Lab-Putty for denture relining, keys and repair matrices, the step of separate isolation is eliminated and a perfect smooth acrylic denture surface is guaranteed.

Testimonial:

«ZahnArt» dental-laboratory Dornbirn, Austria

TECHNICAL DATAS LAB-PUTTY HARD: *

Product	Mixing time in s	Working time in s	Setting time in min	Endhardness in shore A	Dimension stability in %	Heat resistance in °C / °F
Lab-Putty	30-45	90	5-7	63-70	1h -0.08 1day -0.16	110°C / 230°F
Lab-Putty					1h -0.04	300°C / 570°F

* after dosage according to instructions for use



coltène® Lab-Putty

coltène® Lab-Putty hard



Order information

Lab-Putty

8805	Lab-Putty Base Activator Dosing spoon	1.350 kg / 900 ml 40 ml 1
8815	Lab-Putty Base Dosing spoons	7.5 kg / 5000 ml 5
8840	Lab-Putty / Lab-Putty hard Activator	40 ml
8850	Lab-Putty / Lab-Putty hard Activator Eco	6 x 40 ml

Lab-Putty hard

8882	Lab-Putty hard Base Activator Dosing spoon	1.800 kg / 900 ml 40 ml 1
8880	Lab-Putty hard Base Dosing spoons	5 kg / 2600 ml 5
8840	Lab-Putty / Lab-Putty hard Activator	40 ml
8850	Lab-Putty / Lab-Putty hard Activator Eco	6 x 40 ml

Coltène/Whaledent AG
Feldwiesenstrasse 20
9450 Altstätten/Switzerland
Tel. +41 (0)71 757 53 00
Fax +41 (0)71 757 53 01
office@coltenewhaledent.ch

Coltène/Whaledent Inc.
235 Ascot Parkway
Cuyahoga Falls, Ohio 44223/USA
Tel. +1 330 916 8800
Fax +1 330 916 7077
productinfo@coltenewhaledent.com

coltène 
whaledent®

Coltène/Whaledent Internet:
www.coltenewhaledent.com